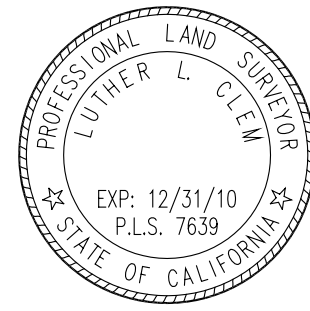


**SURVEYOR'S STATEMENT**

THIS MAP CORRECTLY REPRESENTS A SURVEY MADE BY ME OR UNDER MY DIRECTION IN CONFORMANCE WITH THE REQUIREMENTS OF THE PROFESSIONAL LAND SURVEYORS' ACT AT THE REQUEST OF THE UNITED GREEK ORTHODOX COMMUNITY OF SAN FRANCISCO, THE ANNUNCIATION IN JAN 2009



LUTHER L. CLEM PLS 7639  
CERTIFICATE EXPIRES 12/31/10

**CITY AND COUNTY SURVEYOR'S STATEMENT**

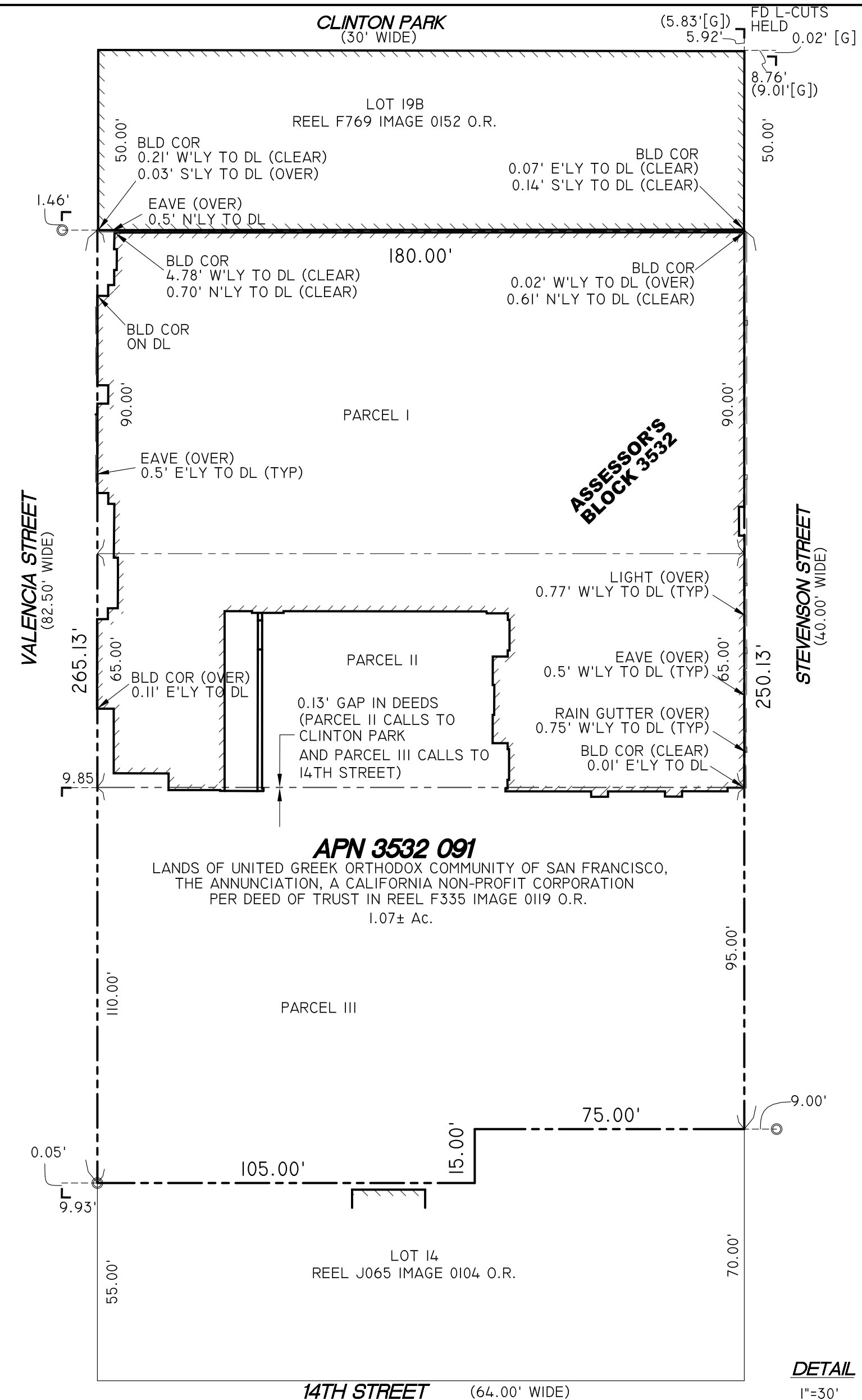
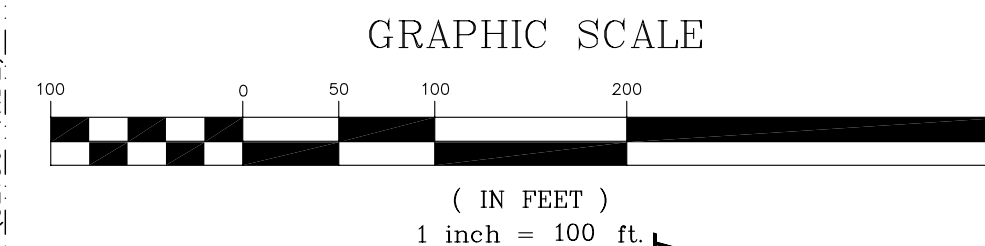
THIS MAP HAS BEEN EXAMINED IN ACCORDANCE WITH SECTION 8766 OF THE PROFESSIONAL LAND SURVEYORS' ACT THIS \_\_\_\_\_ DAY OF \_\_\_\_\_, 20\_\_\_\_.

BRUCE STORRS, CITY AND COUNTY SURVEYOR  
CITY AND COUNTY OF SAN FRANCISCO

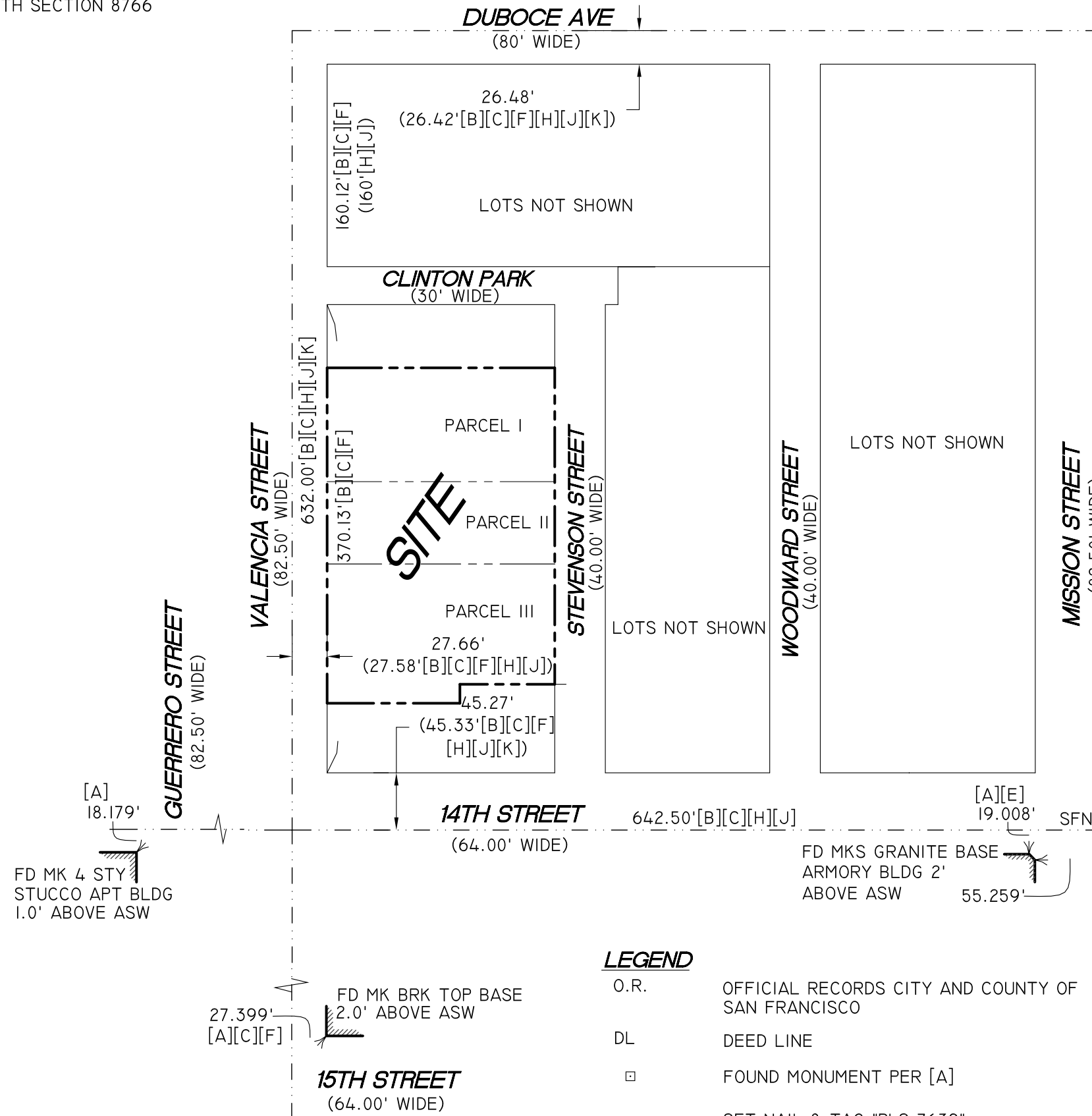
BY: BRUCE R. STORRS L.S. 6914  
EXPIRES ON SEPT 30, 2009

**BASIS OF SURVEY**

TRUST DEED RECORDED IN REEL F335 IMAGE 0119 O.R.  
THE MONUMENT LINE ON 14TH AVE, AS SHOWN HEREON.



**DETAIL**  
1"=30'



**LEGEND**

O.R.	OFFICIAL RECORDS CITY AND COUNTY OF SAN FRANCISCO
DL	DEED LINE
□	FOUND MONUMENT PER [A]
○	SET NAIL & TAG "PLS 7639"
---	DEED LINE
SFNF	SEARCHED FOR NOT FOUND

**REFERENCES:**

THE FOLLOWING DOCUMENTS WERE REVIEWED AS A PART OF THE SURVEY. MAP REFERENCES UTILIZED IN THE OPINION ARE SHOWN NEXT TO THE RELEVANT DIMENSIONS IN BRACKETS [ ] .

- [A] MONUMENT MAPS 259, 260, AND 261 ON FILE IN THE OFFICE OF THE CITY ENGINEER, CITY AND COUNTY OF SAN FRANCISCO
- [B] MONUMENT MAP NO. "B-18" ON FILE IN THE OFFICE OF THE CITY ENGINEER, CITY AND COUNTY OF SAN FRANCISCO
- [C] BLOCK DIAGRAM "MISSION BLK. 27 BOOK 37 PAGE 62-64" DATED MAY 9, 1910, ON FILE IN THE OFFICE OF THE CITY ENGINEER, CITY AND COUNTY OF SAN FRANCISCO
- [D] BLOCK DIAGRAMS (2) UNTITLED ON FILE IN THE OFFICE OF THE CITY ENGINEER, CITY AND COUNTY OF SAN FRANCISCO
- [E] MONUMENT MAP NO. "W-8-10" (2) AND "W-8-10A" ON FILE IN THE OFFICE OF THE CITY ENGINEER, CITY AND COUNTY OF SAN FRANCISCO
- [F] FIELD BOOK INDEX 3532 ORDER NO 901L DATED 12-21-34 ON FILE IN THE OFFICE OF THE CITY ENGINEER, CITY AND COUNTY OF SAN FRANCISCO
- [G] FIELD NOTES SUPPLIED BY MARTIN RON ASSOCIATES DATED MARCH 31, 1922 "#7852"
- [H] CONDOMINIUM MAP FILED IN BOOK 15 OF CONDO MAPS, PAGES 43-45 O.R.
- [J] CONDOMINIUM MAP FILED IN BOOK 17 OF PARCEL MAPS, PAGES 74-76 O.R.
- [K] CONDOMINIUM MAP FILED IN BOOK 53 OF CONDO MAPS, PAGES 112-114 O.R.

**GENERAL NOTES:**

- (1) ALL ANGLES ARE 90° UNLESS OTHERWISE NOTED.
- (2) ALL DISTANCES ARE IN FEET AND DECIMALS THEREOF, UNLESS OTHERWISE NOTED.
- (3) ENCROACHMENT UPON AND BY THE ADJOINING PRIVATE PROPERTY(IES) ARE HEREBY NOTED AND IT SHALL BE THE RESPONSIBILITY SOLELY OF THE PROPERTY OWNERS INVOLVED TO RESOLVE ANY ISSUE WHICH MAY ARISE THEREFROM.
- (4) THIS RECORD OF SURVEY IS BEING FILED IN ACCORDANCE WITH THE PROFESSIONAL LAND SURVEYORS' ACT, SECTION 8762 (b), SUB SECTIONS I AND 3.
- (5) IF RECORD DIMENSIONS DIFFER FROM FIELD MEASURED DIMENSIONS, THE RECORD INFORMATION IS IN PARENTHESIS ( ) FOLLOWED BY RECORD REFERENCE IN BRACKETS [ ] .
- (6) 14TH STREET MONUMENT LINE WAS HELD FOR BLOCK ALIGNMENT, THEN L-CUTS WERE HELD FOR POSITIONING AS SHOWN.
- (7) THE BOUNDARY SHOWN IS GENERALLY SUPPORTED BY OCCUPATION AND CURB SPLITS

**RECORDER'S STATEMENT**

FILED FOR RECORD THIS \_\_\_\_\_ DAY OF \_\_\_\_\_, 20\_\_\_\_,  
AT \_\_\_\_\_ MINUTES PAST \_\_\_\_\_ M., IN BOOK \_\_\_\_\_ OF SURVEY  
MAPS, AT PAGE(S) \_\_\_\_\_, INCLUSIVE, OFFICIAL RECORDS OF  
THE CITY AND COUNTY OF SAN FRANCISCO, STATE OF CALIFORNIA  
AT THE REQUEST OF GEOMETRIX SURVEYING ENGINEERING, INC.  
BY: \_\_\_\_\_ DATE: \_\_\_\_\_  
COUNTY RECORDER  
CITY AND COUNTY OF SAN FRANCISCO  
STATE OF CALIFORNIA

**RECORD OF SURVEY #5588**  
OF  
LANDS OF UNITED GREEK ORTHODOX COMMUNITY  
OF SAN FRANCISCO, THE ANNUNCIATION,  
A CALIFORNIA NON-PROFIT CORPORATION  
AS DESCRIBED IN THAT CERTAIN DEED OF  
TRUST RECORDED IN REEL F335, IMAGE 0119 O.R.  
CITY AND COUNTY OF SAN FRANCISCO CALIFORNIA  
SCALE AS NOTED APRIL 2009

**GEOMETRIX**  
SURVEYING ENGINEERING INC.  
5436 CALIFORNIA STREET  
SAN FRANCISCO, CA 94118  
(415) 422-0527  
(415) 422-0577  
LOU@GEOMETRIXSURVEY.COM